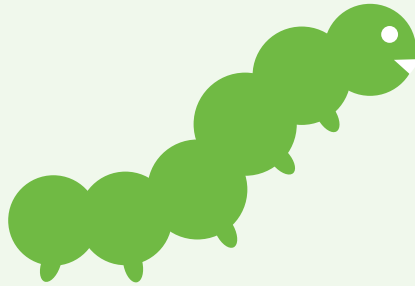


# Kidspace Caterpillar Care Instructions



## **caterpillar** adoption days

**March 12 - April 18**

**Use this guide after you adopt  
your Painted Lady Caterpillar.**

*Bring this guide with you to receive \$1.00 off  
admission for up to 4 guests to the Kidspace Butterfly  
Release on Saturday, April 18, 2009.*

CODE: Butterfly Release



## Welcome to the Wonderful World of Metamorphosis!

Now that you've adopted a Painted Lady caterpillar, you'll be able to witness firsthand all of the stages of its metamorphosis, from caterpillar to chrysalis to butterfly!

This simple guide describes how to care for your caterpillar, and explains some of the behavior you may see during the different stages of your caterpillar's life cycle. You can keep track of your caterpillar's progress in the Caterpillar Adoption Journal at the back of this booklet.

As a participant in Kidspace's Caterpillar Adoption Days, you are cordially invited to join us for the 13th Annual Grand Butterfly Release Ceremony on Saturday, April 18, 2009 at 2:00 p.m.

If your butterfly is ready for release, bring it along. Otherwise, plan to create a family tradition with a private butterfly release ceremony, and come to Kidspace on April 18th to join our celebration of butterflies!

**We look forward to seeing you on your next visit to Kidspace!**  
*The Kidspace Butterfly Team*

### STAGE 1: Larva (Caterpillar)



#### During this stage it is important to:

- Keep the lid on the container so the nutrient inside is kept clean.
- Keep the container out of direct sunlight.
- Keep the container upright; do not shake the container.

It will take the caterpillar between 7 and 12 days to complete its stage 1 development at normal room temperature. A warm sunlit location in your classroom/home will accelerate the process of metamorphosis of your caterpillar.

#### Behavior to Watch for:

At the end of the larva stage, the caterpillar will climb to the top of the container and hang down head first. When this occurs, it is very important that you do not disturb or handle the container.

### STAGE 2: Pupa / Chrysalis



#### Behavior to Watch for:

About one to two days after the caterpillar has suspended itself from the lid at the top of the container, it will shed its coat and you will see an iridescent chrysalis (pronounced "kris-a-lis") appear.

A moth forms a cocoon;  
 A butterfly forms a chrysalis.

During the next 7 to 10 days, the chrysalis will remain stationary. Inside the chrysalis however, lots of changes are taking place. The old body parts of the caterpillar are being replaced by what will eventually be the new body parts of the butterfly.

### STAGE 3: Moving Day



#### IMPORTANT:

After the chrysalis forms but before the butterfly emerges, it is important to move the chrysalis to a larger container where the butterfly will be able to survive before being released. Please follow the instructions for 'Building a Butterfly Bungalow' on the next page to ensure a safe moving day for your chrysalis.

### STAGE 4: A Butterfly Emerges!



When the butterfly emerges from its chrysalis, you may see a red liquid appear. This is not blood. This liquid is a combination of left-over coloring from wing formation and unneeded tissues of the caterpillar. It is called meconium.

After the butterfly emerges, it will hang in a vertical position with its wings down until blood can be pumped into them. In a short time, the wings will be ready for flight.

**\* Note: In order for its wings to dry properly, there must be a stick or branch in your bungalow on which the butterfly can rest.**

## BUILDING A BUTTERFLY BUNGALOW

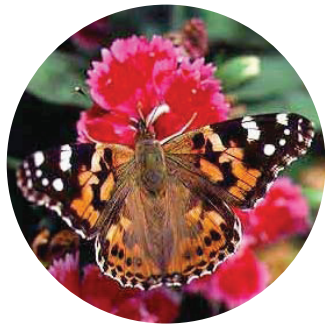
### What You'll Need:



### How to Make a Butterfly Bungalow

- Cut a large window in one side of the box, large enough so you can see the butterfly wherever it may be in the box. Attach a sheet of plastic wrap or a screen over the window with tape.
- Make a small flap in the box that can serve as a door so you can feed the butterfly once it has emerged. When not in use, keep the flap taped shut..
- Paint a garden background in your bungalow, using paint or crayons directly on the box, or on a piece of paper attached to the inside and/or outside of the box. Green and brown are good color choices as they mimic the butterfly's natural home. Make sure that the paint is dry before you move the chrysalis.
- Place a branch or stick diagonally across the inside of the box, so the butterfly has a surface to walk on when it emerges.
- Attach the lid with the chrysalis to the back of the butterfly bungalow with a piece of tape. The chrysalis should hang down in a vertical position. If the chrysalis becomes detached from the lid, simply lay it down on the bottom of the box.

## STAGE 5: Feeding Your Butterfly



A homemade sugar solution can substitute for the nectar that butterflies like to sip in nature. The butterfly will "sip" the sugar water solution with its proboscis (a long coiled butterfly mouth part that uncoils to form a drinking straw") from the wick.

### How to Make Home-Made Butterfly Nectar

- Mix two tablespoons of sugar into one cup of water.
- Wash out the container the caterpillar was in and use it as a feeding bottle: you can also use a pill bottle.
- Fill half the container with the sugar solution.
- Make a wick using cotton or by rolling up a piece of paper toweling.
- Place the wick in the container until it extends about a half inch into the liquid; the other end of the wick (about 1/2" to 1") should extend out of the container.

\* **Note:** Make sure to change the sugar water solution daily

### Painted Lady butterflies need different plants at different stages of their lifecycle.

Adults like to lay eggs on hollyhock and mallow.  
The larvae feed on hollyhock, mallow, and wild sunflower.  
They pupate and form chrysalises on hollyhock and mallow.  
As adults, they drink the nectar of clover.

## STAGE 6: The Grand Butterfly Release



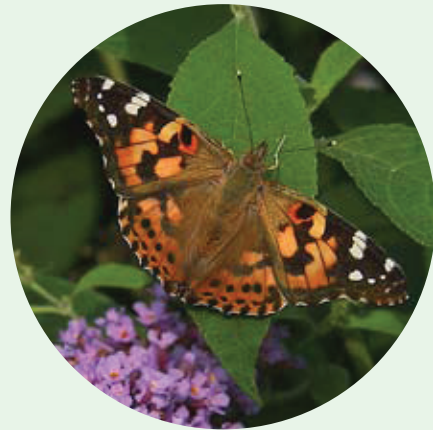
### Kidspace is pleased to host the 13th Annual Grand Butterfly Release ceremony on Saturday, April 18, 2009.

All caterpillar adopters, and butterfly lovers, are invited to join us for a day full of activities celebrating the wonders of life.

If your butterfly emerges between April 14 and 17, please bring your butterfly in its bungalow with you to the Festival so you can participate in the Grand Butterfly Release ceremony at 2:00 p.m.

If your butterfly emerges earlier than April 15, or emerges after April 18, you get to create your own butterfly release ceremony! It is important that you do not keep an emerging butterfly in its bungalow for more than four (4) days.

## PAINTED LADY (*Vanessa cardui*)



The painted lady is also known as the Thistle Butterfly because the caterpillars like to feed on thistle, and also as the Cosmopolitan because it is the most widely distributed butterfly in the world.

Painted lady butterflies live on all continents except Australia and Antarctica. From the deserts of northern Mexico, the painted lady migrates and temporarily colonizes the United States and Canada south of the Arctic. Several generations can occur in a single year with adult butterflies capable of traveling more than 30 miles in their 2-4 week life span.

Food: Thistle and nettles. In the Los Angeles Basin the larvae will eat hollyhocks and cheeseweed (*Malva parviflora*), a common weed of vacant lots. Planting these in your garden will attract butterflies.

Taxonomy: Order: Lepidoptera. Family: Nymphalidae

Related Species: West Coast Lady (*Vanessa carye anabella*) is more common in Los Angeles Basin than the Painted Lady. Virginia Lady (*Vanessa virginiensis*)

# Kidspace Caterpillar Adoption Journal

**\*Note: Make copies of this page to keep track of your caterpillar's progress throughout its metamorphosis!**

Your Name: \_\_\_\_\_

Today's Date: \_\_\_\_\_

Adoption Day Number: \_\_\_\_\_

My painted lady is in this stage of metamorphosis:  
(Circle One)



What does your painted lady look like today?

How has it changed since the last time you looked at it?

What do you think it will look like next time?

Share your experience online at  
[caterpillar.kidspacemuseum.org](http://caterpillar.kidspacemuseum.org)

## Kidspace Caterpillar Care Instructions



### Don't forget to visit the Nature Exchange Nursery!

Learn all about the life cycle of a butterfly, visit growing caterpillars, take an oath promising to take care of your adopted caterpillar, play games, and earn Nature Exchange points.



Once you have visited the Nature Exchange Nursery, share your experiences with other kids at [caterpillar.kidspacemuseum.org](http://caterpillar.kidspacemuseum.org) and learn more about butterflies and their mystifying metamorphosis.

[caterpillar.kidspacemuseum.org](http://caterpillar.kidspacemuseum.org)



# butterfly release

**April 18, 2009**

*Remember to bring this booklet with you to receive  
\$1.00 off admission for up to 4 guests to the Kidspace  
Butterfly Release on April 18, 2009.*

CODE: Butterfly Release

[www.kidspacemuseum.org](http://www.kidspacemuseum.org)

